

# Corrigendum to “The dark-red spider mite, *Tetranychus ludeni* Zacher (Acari: Tetranychidae) – a new pest in Serbian acarofauna”

Ivana Marić\*, Irena Međo and Dejan Marčić

(Volume 37, Issue 3, pp. 85-93; doi: <https://doi.org/10.2298/PIF2203085M>)

\*Corresponding author: [ivamar24@gmail.com](mailto:ivamar24@gmail.com)

The original published version of the article contained two errors:

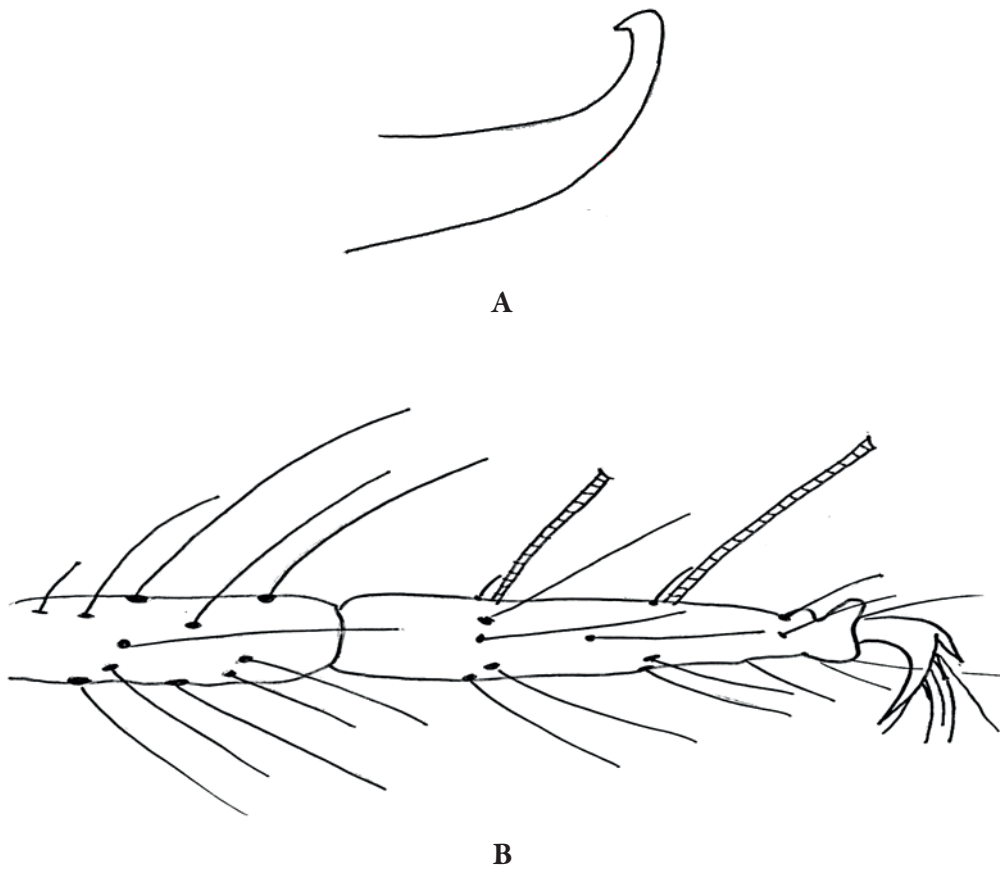
- (1) In Table 1B: tomato was not indicated as a host plant for *T. evansi*
- (2) In Figure 1: After carefully looking at the previous drawings of *T. ludeni* body parts, we concluded that it is necessary to provide new and more precise drawings of the male aedeagus and female tibia/tarsus I

The corrigendum presents the corrected version of Table 1B and Figure 1.

**Table 1B.** Distribution records of *Tetranychus ludeni* in Serbia in 2020

No.	Sampling locations (see Fig. 1)	Host plants (see Tab. 2)	Habitat codes	Population size	Other spider mite species
25.	Kruševac - Velika Drenova	9	I1.2	+++	<i>T. urticae</i>
26.	Trstenik - Počekovina	9	I1.2	+++	<i>T. urticae</i> , <i>T. turkestanii</i>
27.	Vrnjačka Banja - Štulac	9, 16	I1.1	+++	<i>T. turkestanii</i> , <i>T. evansi</i>
28.	Trstenik – Medveđa	9	I1.1	+	
29.	Trstenik - Čairi	10	I1.1	+++	
30.	Paraćin - Čepure	7	I1.1	+	
31.	Paraćin - Ratare	9	I1.3	+	
32.	Batočina - Badnjevac	8, 16	I2.3	+	<i>T. urticae</i> , <i>T. evansi</i>
33.	Šabac - Štitar	16	J2.4	+	<i>T. evansi</i>
34.	Šabac - Dobrić	9	J2.4	++	<i>T. urticae</i> , <i>T. turkestanii</i>
35.	Bogatić	9	I1.2	++	<i>T. turkestanii</i>
36.	Vladimirci - Jalovnik	5, 9	I1.2	+	<i>T. urticae</i>
37.	Prnjavor - Petlovača	11	I1.2	+	
38.	Barajevo - Guncati	19	I2.3	+	
39.	Barajevo - Beljina	9	J2.4	+	<i>T. urticae</i>
40.	Mladenovac - Međulužije	9, 11	J2.4	+++	<i>T. urticae</i>
41.	Velika Plana - Krnjevo	11	I1.1	+++	
42.	Sm. Palanka - Selevac	7	I1.1	+	
43.	Sremska Mitrovica - Mandeloš	10	I1.1	+	
44.	Bačka Topola - Krivaja	10	I2.3	+	
45.	Zrenjanin - Orlovat	9, 10	I1.3	+	<i>T. urticae</i>
46.	Niš - Donje Međurovo	9	I1.1	+++	
47.	Leskovac - Donje Krajince	9	I1.1	+	
48.	Leskovac - Gornji Bunibrod	9, 10	I1.1	+++	<i>T. urticae</i>
49.	Predejane - Gravovo	11	I1.2	+	<i>T. turkestanii</i>

I Regularly or recently cultivated agricultural, horticultural and domestic habitats: I1.1 = Intensive unmixed crops; I1.2 = Mixed crops of market gardens and horticulture; I1.3 = Arable land with unmixed crops grown by low-intensity agricultural methods; I2.3 = Recently abandoned garden areas. J = Constructed, industrial and other artificial habitats: J2.4 = Agricultural constructions



**Figure 1.** - *T. ludeni*; A-male aedeagus; B-tibia/tarsus, female